



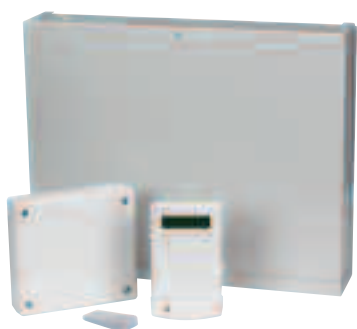
SUPERBLY DESIGNED, HIGH QUALITY, EN50131-1  
GRADE 3 COMPLIANT SYSTEM SUPPORTED BY A  
FULL RANGE OF ACCESSORIES

**The ultimate intruder alarm system for  
commerce and industry**

# Galaxy 3 Series Security Systems

Based on the established Galaxy 8-512 control panel range the Galaxy 3 Series improves on an industry market leader to provide high quality reliable, intruder solutions for commercial and industrial applications. Designed with the installer and end user in mind the Galaxy 3 Series combines great flexibility with common sense practicality. The Galaxy 3 Series is suitable for use in installations compliant to PD6662:2004/prEN50131-1:2004 security grade 3, and environmental class II.

There are two panels in the 3 series range, the Galaxy 3-144 and Galaxy 3-520.



## Galaxy 3 Series main features

- Fully compatible with existing Galaxy peripherals
- Alarm signalling in multiple formats (Ademco Fast, SIA levels 0-3, Contact ID, Microtech) over multiple technologies (PSTN, Ethernet, ISDN, RS232)
- Programmable backup signalling allowing a secondary signalling technology to become the primary signalling path in the event of a complete failure to the programmed primary path
- Simple, fast panel configuration memory storage and application upgrade via the new Galaxy SPI Programming key
- Comprehensive remote servicing support
- Ability to detect zone alarm and anti-masking conditions on a single zone
- Zone activity monitor to identify faulty sensors prior to critical failure event
- Remote diagnostics, allowing remote maintenance of the Galaxy system

## Peripherals

The Galaxy 3 Series is supported by a comprehensive peripheral set

- Galaxy Mk7 LCD Keypad
  - 2 x 16 alphanumeric character display
- Galaxy alphanumeric LCD Keyprox
  - Equivalent to Galaxy Mk7 keypad with integrated ASK prox reader
  - Allows the system to be set and unset by use of proximity card
  - Can be used for DD243 compliant system configuration
- RIO
  - System expander module - 8 zones/4 outputs
- RF RIO
  - Wireless system expander module - supports up to 32 wireless zones and 4 hardwired outputs
- MAX<sup>3</sup>
  - Complete door control in a single unit
  - Can be used as standalone or integrated into the Galaxy control system
- Galaxy Smart PSU
  - 3A PSU with integrated RIO
- Galaxy Power RIO (\*NEW\*)
  - 2.75A prEN50131-1:2004 grade 3 compliant PSU with integrated RIO
- Optional communication modules for alarm signalling and remote servicing over IP/PSTN/ISDN networks
- Galaxy Printer Interface
- Doorguard Interface Unit

Feature	Specification	
	GALAXY 3-144	GALAXY 3-520
Zones	16 expandable using RIO to 144	16 expandable using RIO to 520
Outputs	8 expandable using RIO to 68	8 expandable using RIO to 256
RS485 Peripheral Lines	2	4
Alphanumeric LCD Keypads	16	32
Alphanumeric LCD KeyProx	7	24
RIO (8 zones/4 outputs)	16	63
RF RIO - Wireless RIO	16	63
MAX <sup>3</sup> - Door Control Unit	8	32
User Codes (PIN and Card)	250	999
Groups	8	32
Part Set	Yes	Yes
7 Day Timer	2	2
Autoset Timers	20 On/Off (per group)	20 On/Off (per group)
Zone Types	41	41
O/P Types	60	60
Event Log	500	1000
MAX Log	500	1000
Multi-Users	8	16
Links	128	256
Integrated PSU	2.5A (1.25A @ grade 3)	2.5A (1.25A @ grade 3)
Printer Module	Optional	Optional
PSTN Communicator/Modem	On-Board or Optional	On-Board or Optional
Ethernet Communicator	Optional	Optional
RS232 Ports	On-board + Optional	On-Board + Optional
ISDN Communicator	Optional	Optional

## Honeywell Security & Custom Electronics

(UK64)

Newhouse Industrial Estate

Motherwell

Lanarkshire

ML1 5SB

Tel: +44 1698 73 8200

Fax: +44 1698 73 8300

[www.honeywell.com/security/uk](http://www.honeywell.com/security/uk)

## PC Support Packages

The Galaxy 3 Series is complemented by an extensive set of PC applications for remote servicing and maintenance. The PC applications are:

- Galaxy Remote Servicing Suite - Designed for installers, this standalone package allows full remote servicing and maintenance
- Galaxy User Management Suite - Designed for Security Managers this standalone package allows user management of codes and timers
- Honeywell Networking Downloader - Designed for large remote servicing operations this network based package allows simultaneous remote servicing of multiple Galaxy 3 Series, Galaxy 8-512 and Galaxy 2 Series panels